

Ficha Técnica



Encore

 **VEEDER-ROOT**

 **RED JACKET**

 **CATLOW**

 **DOMS**

 **INSITE360**

 **GASBOY**



 (+51) 999 012 777

 ventas@sdm.pe
www.sdm.pe

SDM
Soluciones De Mercado

DISTRIBUIDOR OFICIAL



A **VONTIER** COMPANY

AtlasX

Next-Gen Commercial Refueling

9800G Electronic High Flow Pumps and Dispensers

Introducing AtlasX 9800G commercial series. Leveraging the strength of our legacy Atlas and Encore brands, AtlasX pumps and dispensers offer centralized, optimized, and efficient commercial refueling.

The AtlasX electronic series is built with anodized aluminum panels that enable greater durability without welding points. The AtlasX electronic dispenser incorporates enhanced security features and real-time monitoring and reporting capabilities.

The Gasboy electronic dispenser is equipped with advanced electronic metering technology, ensuring accurate and precise fuel measurements.



Model number	Description	Type	Hoses	Products	Register	Flow rating
9853G	Single Pump	Pump	1	1	Elec	22 gpm
9853GTW1M	Twin Pump	Pump	2	1	Elec	22 gpm
9853GTW2	Twin Pump	Pump	2	2	Elec	22 gpm
9853GX	Single Dispenser	Dispenser	1	1	Elec	22 gpm
9853GXTW1	Twin Dispenser	Dispenser	2	1	Elec	22 gpm
9853GXTW2	Twin Dispenser	Dispenser	2	2	Elec	22 gpm

Feature	Description	9853G
Approvals	Safety, UL and cUL Listed W&M, NCWM, Measurement Canada (MC)	S
Working Pressure	50 psi maximum	S
Unit of Measure	Gallons/Liters Selectable	S
Filters	Internal spin-on style External canister style	S O
Piping	Internal fuel piping	1"
Discharge	Hose connection-NPT	1"
Satellite Piping	Satellite piping connections (S)-dispenser only	O
Inlet	Island connection-NPT	1 1/2"
Junction Box	Field wiring junction box	S
Housing	G30 Galvanized steel	13GA
Panels/Sheathing	Lockable removeable-precoated aluminum 2mm thick Lockable removeable-stainless steel-22 gauge	S O
Motors/voltages	1HP 115/230 VAC, 60HZ 1HP 115/230 VAC, 50Hz	S O
Meter	Gilbarco 4 piston PD V10 meter	S
Calibration	Electronic	S
Pump models	GPU + gear pump	S
Solenoid valve	2-stage valve for preset operations (PP)	1"
Connectivity	2 Wire Communication Protocol Pulse Output, Dual Channel	S
Brand Panel	Lighted brand panel	O
Totalizer	Mechanical 10-digit Totalizer	O
Power fail backup	Display retained 15 minutes	S
ATC	Automatic Temperature Compensation (Canada only)	O

Operating Environment

Environment	Range	
Relative humidity	20% to 95% non-condensing	S
Electronics Minimum Ambient Temperature	-22°F (-30° C)	S
Electronics Maximum Ambient Temperature	131°F (55° C)	S
Hydraulics Minimum Ambient Temperature	29°C (-20°F)	S
Hydraulics Maximum Ambient Temperature	52°C (125° F)	S



1 Year Warranty

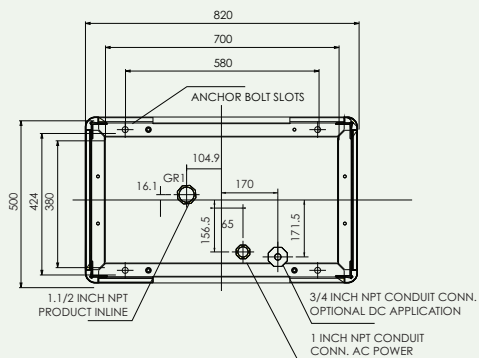
Commercial and Retail Pumps and Dispensers are warranted against defects in material and workmanship for 12 months from date of installation or 24 months from date of original invoice, whichever occurs first. AtlasX PRIME factory installed fuel management system electronics are also warranted against defects in material and workmanship for 12 months from date of installation or 24 months from date of original invoice. Warranty coverage for AtlasX and AtlasX PRIME includes parts and labor. Field-installed kits are warranted against defects in material and workmanship for 12 months from date of installation or 24 months from date of original invoice, whichever occurs first. The warranty coverage is for parts only.

S = Standard
O = Optional
– = Not available

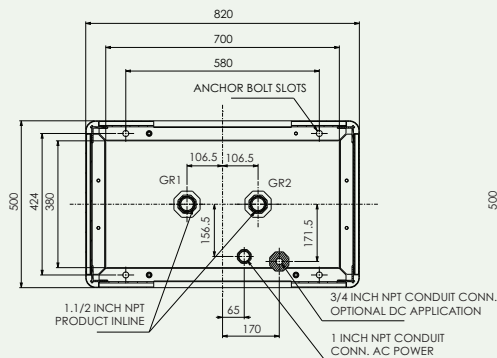
Technical Specification and Foundation Layout

(Measurements in mm)

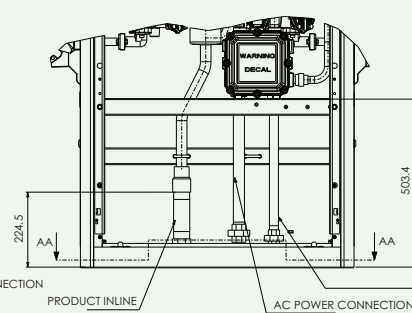
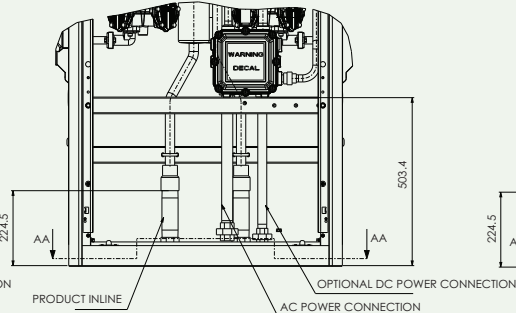
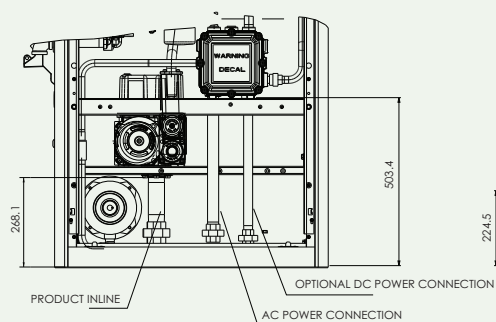
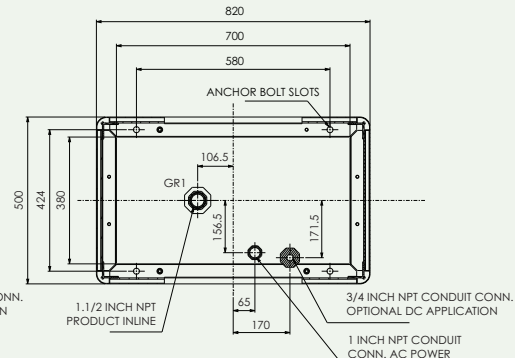
9853G



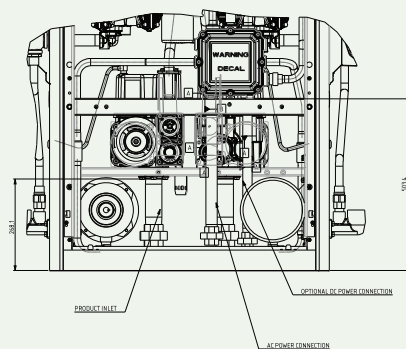
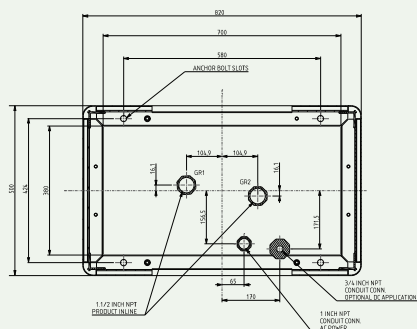
9853GXTW2



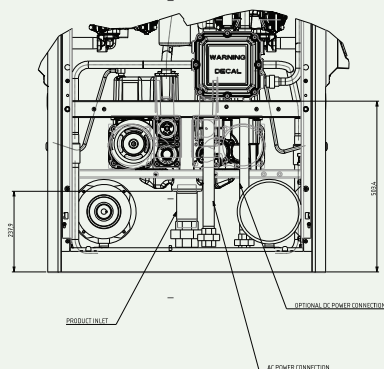
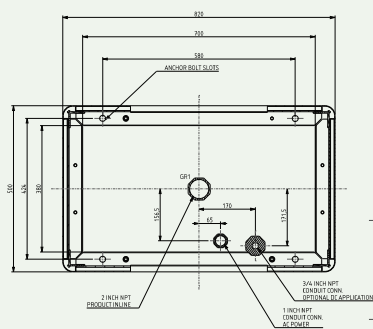
9853GX / 9853GXTW1



9853GTW2



9853GTW1M

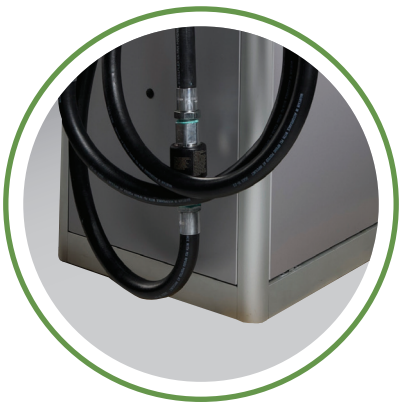


AtlasX Key Enhancements



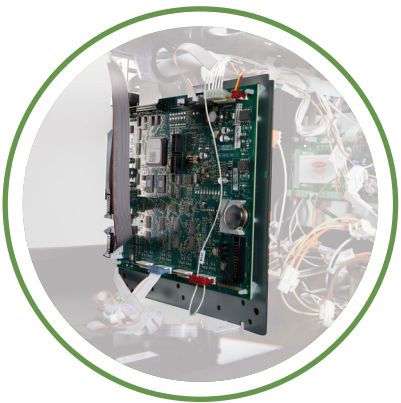
Best-in-class engineering

The Gasboy 4 piston PD V10 Meter includes enhanced performance features that reduce calibration drift over time.



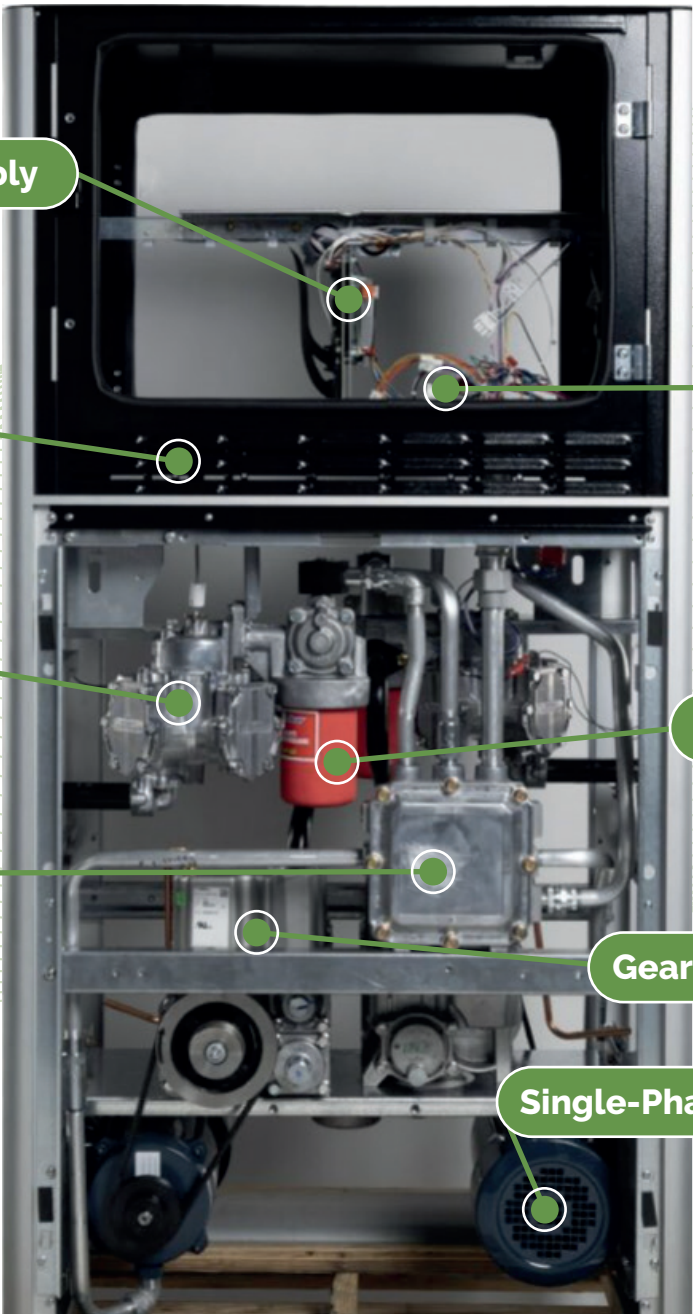
Modern design

Taller, sleeker design with smooth modern lines built with anodized aluminum panels that enable greater durability.



Future-proof

Modern Encore Electronics platform provides the foundation for future applications (remote diagnostics, remote software updates, secure payments etc.)



Electronic Board Assembly

UL Air Gap

Pulser

V10 Meter

Junction Box

Internal Filter

Gear Pumping Unit

Single-Phase 1 HP Motor



GASBOY

A VONTIER COMPANY