



Producto distribuido por

SDM
Oil & Gas

 (+51) 999 012777  ventas@sdm.pe

www.sdm.pe | Av. Galvez Barrenechea 274. San Isidro

ON VEHICLE

Receptacles NGV1 Receptacles



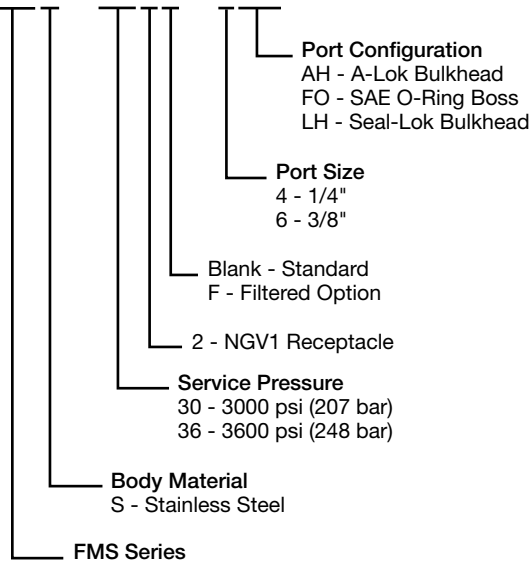
Parker FMS Series receptacles are designed for rigid mounting on a compressed natural gas vehicle. Receptacles can be employed in both fast-fill and time-fill dispensing applications. The ANSI/NGV1 standard used by FMS Series receptacles allows vehicle fueling to be accomplished with all CNG nozzles conforming to the ANSI/NGV1 standard.

Features:

- FMS Series receptacles are certified to ANSI/CSA/NGV1 standards
- Receptacle employs a differential pressure-actuated valve
- Internal check valve provides unidirectional flow-natural gas will only flow from dispenser to vehicle
- Seal is a special Nitrile compound formulated for compressed natural gas service

How To Order

FMS - 362F - 6FO



Materials of Construction

Body	Stainless Steel
Adapter	Stainless Steel
Valving	Stainless Steel
Seal	Special CNG Nitrile Compound

Specification

Pressure	3000 or 3600 psi (207 or 248 bar)
Temperature	-40°F to +250°F (-40°C to +121°C)
Flow Rate	1750 scfm

Dust Cap



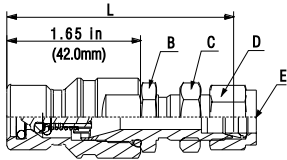
Part Number	Material
FM-66M	Nitrile

ON VEHICLE

Receptacles NGV1 Receptacles

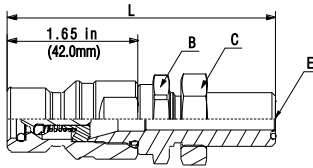


FMS-3*2-*AH



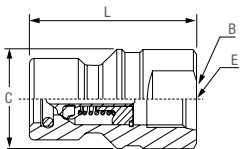
Part Number	L - Length	B - Hex	C - Hex	D - Hex	E - Port End
FMS-302-4AH FMS-362-4AH	2.71" 68.8 mm	0.75" 19.0 mm	0.75" 19.0 mm	0.56" 14.3 mm	1/4" A-Lok Bulkhead
FMS-302-6AH FMS-362-6AH	2.78" 70.6 mm	0.75" 19.0 mm	0.75" 19.0 mm	0.69" 17.5 mm	3/8" A-Lok Bulkhead
FMS-302-8AH FMS-362-8AH	3.09" 78.4 mm	1.00" 25.4 mm	1.06" 27.0 mm	0.88" 22.2 mm	1/2" A-Lok Bulkhead
FMS-302-M6AH FMS-362-M6AH	2.98" 75.6 mm	0.81" 20.6 mm	0.75" 19.0 mm	0.55" 14.0 mm	6mm A-Lok Bulkhead
FMS-302-M8AH FMS-362-M8AH	2.76" 70.1 mm	0.75" 19.0 mm	0.75" 19.0 mm	0.63" 16.0 mm	8mm A-Lok Bulkhead
FMS-302-M10AH FMS-362-M10AH	3.09" 78.4 mm	1.00" 25.4 mm	1.06" 27.0 mm	0.75" 19.0 mm	10mm A-Lok Bulkhead
FMS-302-M12AH FMS-362-M12AH	3.09" 78.4 mm	1.00" 25.4 mm	1.06" 27.0 mm	0.87" 22.1 mm	12mm A-Lok Bulkhead

FMS-3*2-*LH



Part Number	L - Length	B - Hex	C - Hex	E - Port End
FMS-302-4LH FMS-362-4LH	3.03" 77.0 mm	0.81" 20.6 mm	0.81" 20.6 mm	1/4" Seal-Lok Bulkhead
FMS-302-6LH FMS-362-6LH	3.38" 85.9 mm	1.00" 25.4 mm	1.00" 25.4 mm	3/8" Seal-Lok Bulkhead

FMS-3*2-6FO



Part Number	L - Length	B - Wrench Flats	C - Largest Diameter	E - Port End
FMS-302-6FO FMS-362-6FO	1.6" 42 mm	0.81" 20.6 mm	0.98" 25 mm 0.94" 24 mm	3/8" O-Ring Boss

Contact the Quick Coupling Division for other port configurations.