



Producto distribuido por

SDM
Oil & Gas

 (+51) 999 012777  ventas@sdm.pe

www.sdm.pe | Av. Galvez Barrenechea 274. San Isidro

FUELING STATION

Nozzles

Push-to-Connect Fueling Nozzles



Located on CNG fueling dispensers, Parker's NGVC2 Nozzle easily connects with FMS Series receptacles and others certified to ANSI/CSA/NGV1 standards.

Features:

- Certified to ANSI/CSA/NGV1 standards
- This nozzle can be classified as type 2 or 3 and can be used for both fast-fill and time-fill service
- Left-hand thread configurations are available for use on home refueling dispensers
- Push-to-connect, manually retract sleeve to disconnect
- Non-marring polyurethane sleeve protects vehicle body from surface damage
- Durable ball locking design for longer life

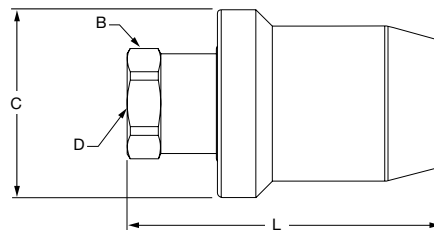
Materials of Construction

Body	Stainless Steel
Adapter	Stainless Steel
Valving	Stainless Steel
Seal	Nitrile and Urethane

Specification

Service Pressure	3000 or 3600 psi (207 or 248 bar)
Temperature	-40°F to +185°F (-40°C to +85°C)
Flow Rate	2100 scfm

NGVC2 Fueling Nozzle



Part Number	L - Length	B - Wrench Flats	C - Largest Diameter	D - Port End
NGVC2-P30	3.51" (89.1 mm)	1.12" (28.4 mm)	2.10" (53.3 mm)	9/16 - 18 UNF
NGVC2-P36	3.51" (89.1 mm)	1.12" (28.4 mm)	2.10" (53.3 mm)	9/16 - 18 UNF