



Producto distribuido por

**SDM**  
Oil & Gas

 (+51) 999 012777  [ventas@sdm.pe](mailto:ventas@sdm.pe)

[www.sdm.pe](http://www.sdm.pe) | Av. Galvez Barrenechea 274. San Isidro

# FUELING STATION

## Breakaway - Fill Line



Parker's NGVBCN2-P50 fill line breakaway provides an important safety feature for CNG dispensing systems. It is certified to ANSI/NGV4.4/CSA12.54 standards for breakaway devices used on natural gas dispensing hoses and systems. It allows the hose to safely disconnect, preventing damage to the dispenser in the event of a "drive off" and sealing the CNG in the fill line to effectively prevent leakage or hose whip.

### Features:

- Exclusive design
- Pressure balanced
- Reliable consistent performance
- Compact size
- Reusable following breakaway (with minimal inspection)

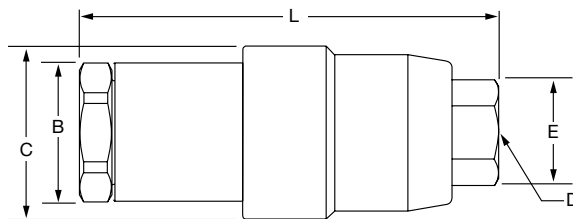
### Materials of Construction

<b>Material</b>	Brass and Stainless with Nitrile and Urethane Seals
-----------------	---

### Specifications

<b>Service Pressure</b>	3600 psi
<b>Forces to Actuate</b>	60/140 lbs. to disconnect at any pressure up to operating
<b>Temperature</b>	-40°F to +150°F (-40°C to +65°C)

### NGVBCN2-P50 Breakaway-Fill Line



Part Number	B - Hex	C - Largest Diameter	D - Port End (2 places)	E - Hex	L - Connected Length
NGVBCN2-P50	1.12" (28.4 mm)	1.53" (38.9 mm)	9/16 - 18 UNF	0.81" (20.6 mm)	3.73" (94.7 mm)