



Producto distribuido por

SDM
Oil & Gas

 (+51) 999 012777  ventas@sdm.pe

www.sdm.pe | Av. Galvez Barrenechea 274. San Isidro

HOSE REEL TYPES

Manual Rewind
Hose reel with handle



Also available with chain transmission for bigger sizes.

Spring Rewind
Hose reel with automatic spring-loaded rewind system



Suitable for retraction of hoses up to 25 m in DN 50 mm.

Electric Rewind
Hose reel with electric motor



Electric motors available:
AC = 230 / 400 V
DC = 12 V / 24 V
Optionally with ATEX certified motors.

Hydraulic Rewind
Hose reel with hydraulic motor



The motor is always provided with levers to operate.

Pneumatic Rewind
Hose reel with pneumatic motor

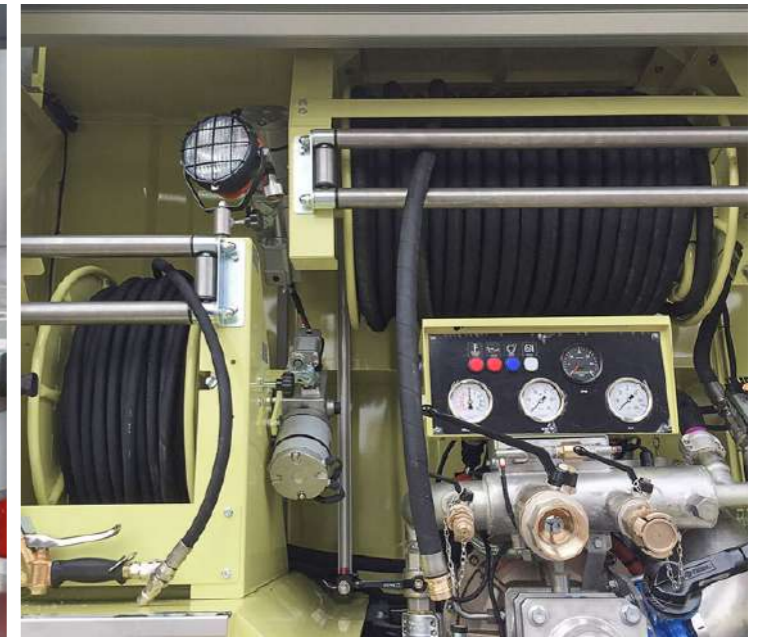
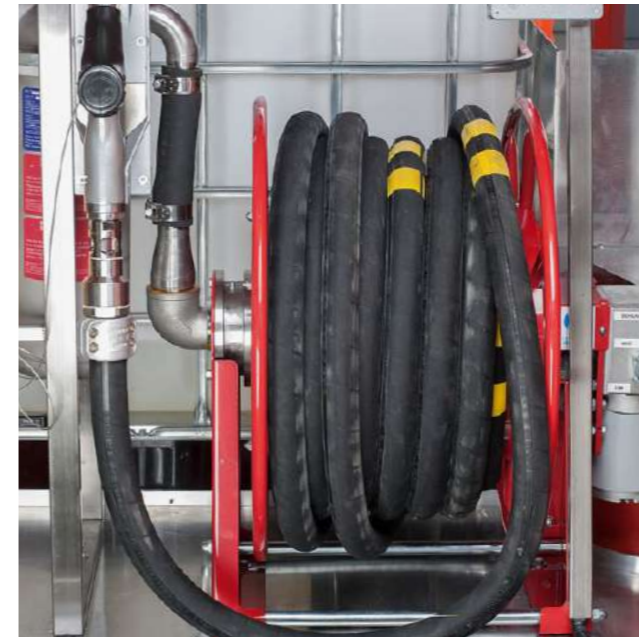
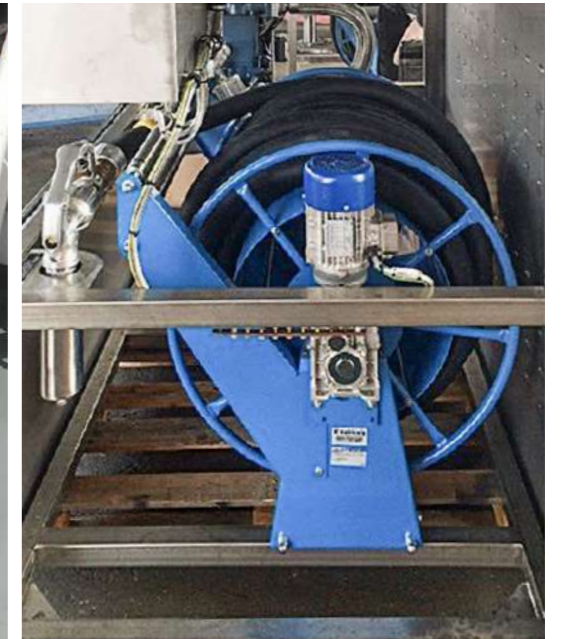


Optionally available with 'ON/OFF' kit to operate the hose reel.

Additional Product: Bonding Reel
Reel with spring rewind mechanism



Frame available in polyester powder coated steel, UV resistant or stainless steel and any colour.
High visibility grounding cable, up to 30m, DN 6mm and different types of clamps.



ELAFLEX Hose Reels are supplied as a complete customised package incl. our hoses, couplings and nozzles.

Hose Reels 'Compact Line HD 25' with automatic spring-loaded rewind system, used for retraction of Elaflex hoses up to 40 m in max. DN 25.

The robust construction with a reinforced spring make this reel very durable and ideal for heavy duty and intensive use, also under rough conditions.

Suitable for a wide range of media, e.g. gasoline, diesel, aviation fuels, urea solution (AdBlue®), detergents, solvents, oils, water, gases and others. For example: HD 25 with ZVA 25 or LPG 25 with DGC coupling for tank trucks.

MATERIALS

Frame: available in polyester powder coated carbon steel, UV resistant (on request: cataphoresis treatment or zinc plated) or stainless steel (AISI 304 or AISI 316L).

Wet parts: available in carbon steel or stainless steel (AISI 304 or AISI 316L).

Swivel joint: available in zinc plated carbon steel, brass or stainless steel (AISI 303 / AISI 316L), in 90° or straight shape*).

Working pressure up to 200 bar*).

Temperature range -40° to +150° C*).

*) depending on materials

COLOURS



RAL 5017



RAL 3002



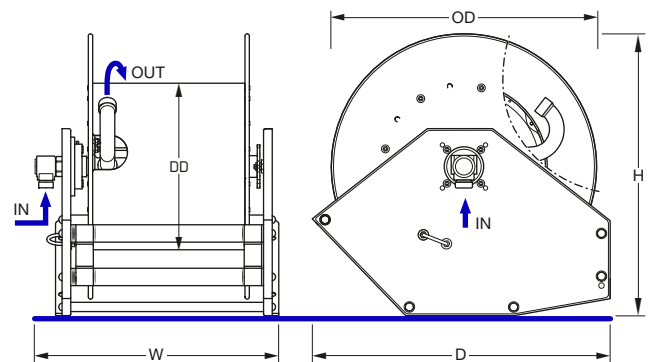
Special Colours
(on request)

MOUNTING POSITIONS

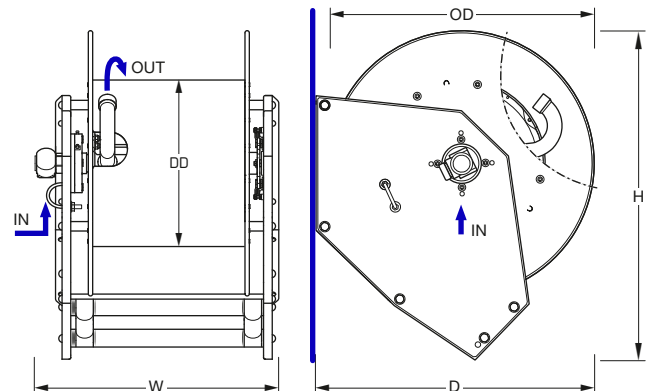
The specially designed side plates allow the installation on plain (Pos. A) or vertical surfaces (Pos. B) without further modification.



Mounting Position A: Plain Surface



Mounting Position B: Vertical Surface



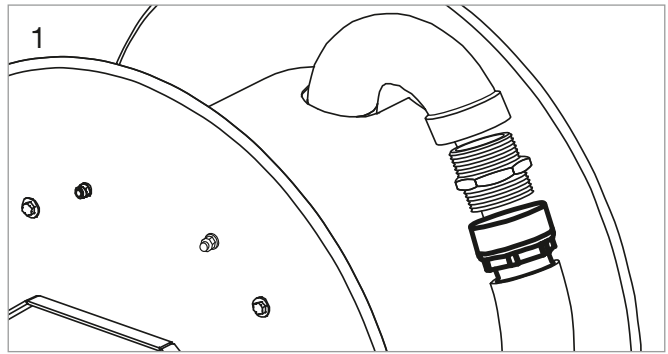
Recommended Hose		Connections	Drum Diameter	Disc Diameter	Dimensions Position A	Dimensions Position B	Weight	Standard Part Number
max. Length	max. DN	IN / OUT	DD Ø (mm)	OD Ø (mm)	W x D x H (mm)	W x D x H (mm)	kg	Type
20 m	DN 25	1" bsp male / 1" bsp female	383	610	461 x 685 x 650	461 x 640 x 760	45	HR CL HD 25 L20
30 m	DN 25	1" bsp male / 1" bsp female	383	610	562 x 685 x 650	562 x 640 x 760	47	HR CL HD 25 L30
40 m	DN 25	1" bsp male / 1" bsp female	383	610	625 x 685 x 650	625 x 640 x 760	49	HR CL HD 25 L40

Please contact our sales team to check capacity when smaller hose diameters are required.

FEATURES

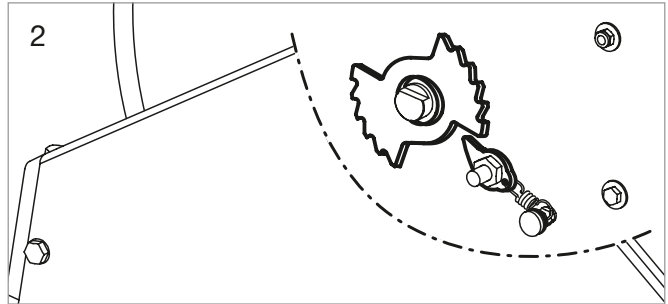
EASY INSTALLABLE HOSE ASSEMBLY (1)

The hose reel is equipped with a threaded carbon steel or stainless steel elbow. To ease the installation of the hose a female threaded union nut shall be used on the hose. A double nipple is needed to connect the hose to the elbow.



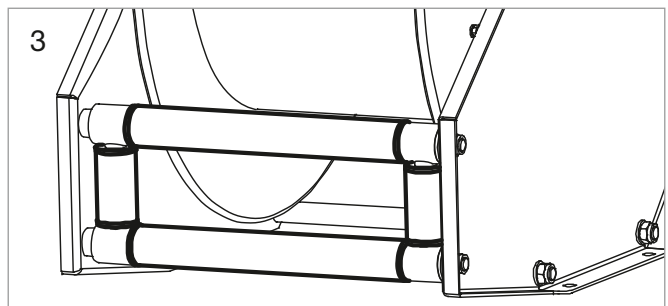
DRUM STOP MECHANISM (2)

All our spring rewind hose reels are equipped with a durable Drum Stop of stainless steel or steel FE 510OR to avoid the accidental hose rewinding. It is also not burdening the operator by permanently pulling the hose against spring force.



REINFORCED HOSE GUIDE (3)

The static Hose Guide is integrated in the frame with durable stainless steel rollers (\varnothing 40 mm). The bearings are maintenance free self-lubricating. The Hose Guide for 'Compact Line HD' is provided in low position as standard.



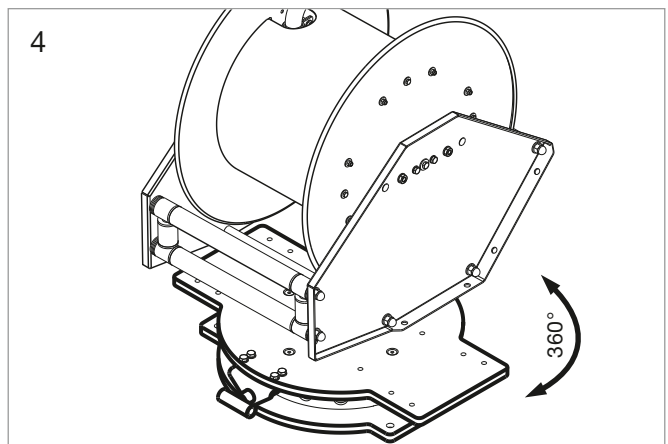
ACCESSORIES

SWIVEL SUPPORT FOR PLAIN INSTALLATION (4)

The Swivel Support is suitable for turning the hose reel in the required direction.

It is used for a plain surface (Pos. A) and allows a free rotation of the reel on its central pin enabling rotations up to 360°.

The integrated lock can fix the reel in the chosen position in 20° steps.



HOSE STOPS (5)

The hose reels can be supplied with a Hose Stop. It prevents the complete rewinding of the hose and can be placed anywhere along the hose assembly to the chosen of the hose length. Shape and dimension can vary according to the hose diameter.



ELAFLEX Hose Reels are supplied as a complete customised package incl. our hoses, couplings and nozzles.

Hose Reels 'Compact Line HD 50' with automatic spring-loaded rewind system, used for retraction of Elaflex hoses up to 25 m in max DN 50.

The robust construction and reinforced spring make this reel very durable and for heavy duty and intensive use, also under rough conditions.

Suitable for a wide range of media, e.g. gasoline, diesel, aviation fuels, urea solution (AdBlue®), detergents, solvents, oils, water, gases and others. For example: HD 50 with ZVF 50 for aviation, UTL 50 with DDC coupling for AdBlue® or FEP 50 with DDC coupling for chemicals.

MATERIALS

Frame: available in polyester powder coated carbon steel, UV resistant (on request: cathaphoresis treatment or zinc plated) or stainless steel (AISI 304 or AISI 316L).

Wet parts: available in carbon steel or stainless steel (AISI 304 or AISI 316L).

Swivel joint: available in zinc plated carbon steel, brass or stainless steel (AISI 303 / AISI 316L), in 90° or straight shape*).

Working pressure up to 200 bar*).

Temperature range -40° to +150°C*).

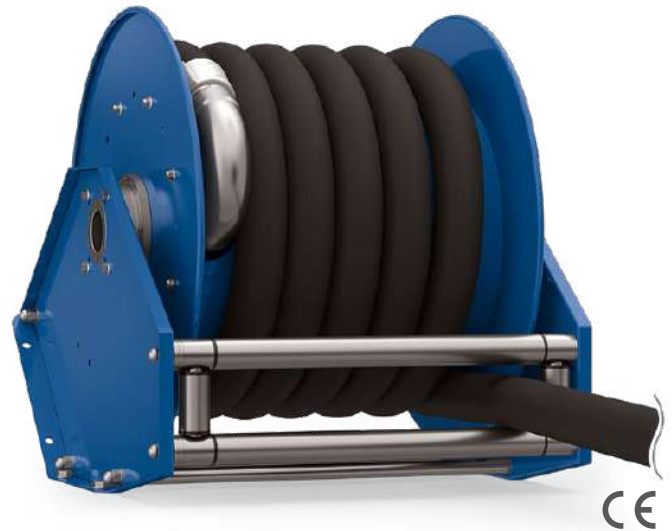
*) depending on materials

COLOURS

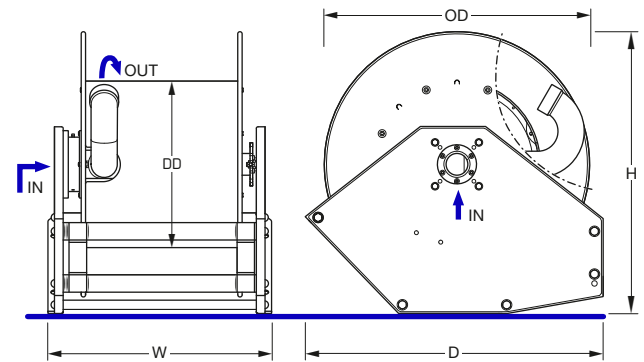


MOUNTING POSITIONS

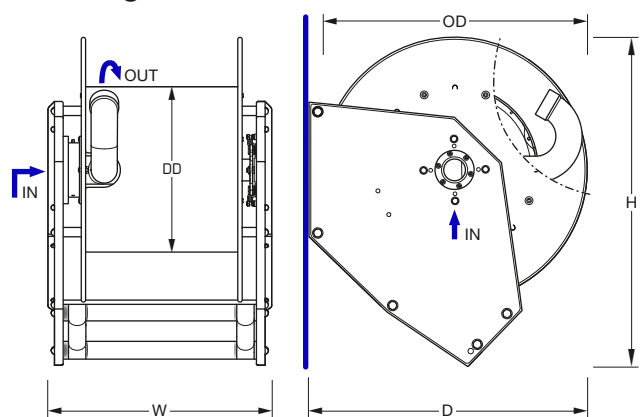
The specially designed side plates allow the installation on plain (Pos. A) or vertical surfaces (Pos. B) without further modification.



Mounting Position A: Plain Surface



Mounting Position B: Vertical Surface



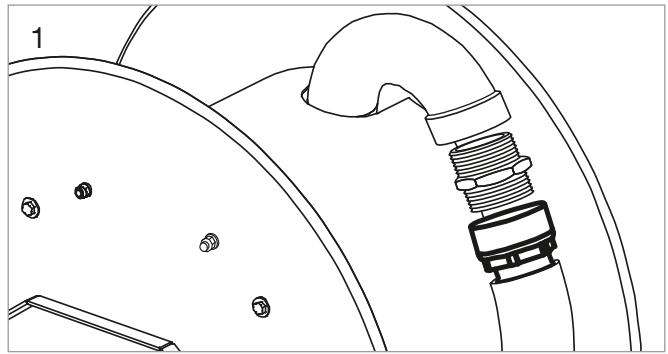
Recommended Hose		Connections	Drum Diameter	Disc Diameter	Dimensions Position A	Dimensions Position B	Weight	Standard Part Number
max. Length	max. DN	IN / OUT	DD Ø (mm)	OD Ø (mm)	W x D x H (mm)	W x D x H (mm)	kg	Type
7,5 m	DN 50	2" bsp female / 2" bsp female	383	610	415 x 685 x 650	414 x 640 x 760	47	HR CL HD 50 L7.5
10 m	DN 50	2" bsp female / 2" bsp female	383	610	515 x 685 x 650	515 x 640 x 760	50	HR CL HD 50 L10
15 m	DN 50	2" bsp female / 2" bsp female	383	610	625 x 685 x 650	625 x 640 x 760	56	HR CL HD 50 L15
20 m	DN 50	2" bsp female / 2" bsp female	383	610	715 x 685 x 650	715 x 640 x 760	68	HR CL HD 50 L20
25 m	DN 50	2" bsp female / 2" bsp female	383	610	775 x 685 x 650	775 x 640 x 760	70	HR CL HD 50 L25

Please contact our sales team to check capacity when smaller hose diameters are required.

FEATURES

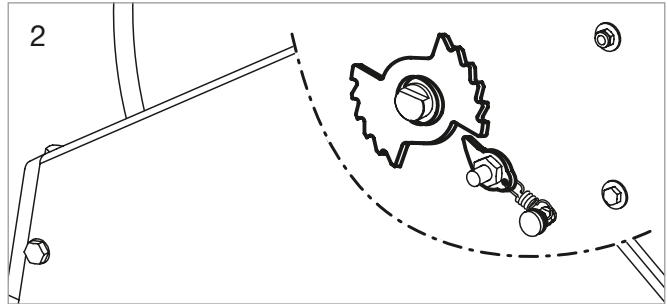
EASY INSTALLABLE HOSE ASSEMBLY (1)

The hose reel is equipped with a threaded carbon steel or stainless steel elbow. To ease the installation of the hose a female threaded union nut shall be used on the hose. A double nipple is needed to connect the hose to the elbow.



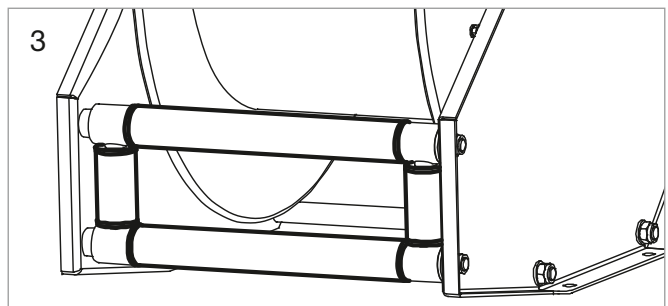
DRUM STOP MECHANISM (2)

All our spring rewind hose reels are equipped with a durable Drum Stop of stainless steel or steel FE 510OR to avoid the accidental hose rewinding. It is also not burdening the operator by permanently pulling the hose against spring force.



REINFORCED HOSE GUIDE (3)

The static Hose Guide is integrated in the frame with durable stainless steel rollers (\varnothing 40 mm). The bearings are maintenance free self-lubricating. The Hose Guide for 'Compact Line HD' is provided in low position as standard.



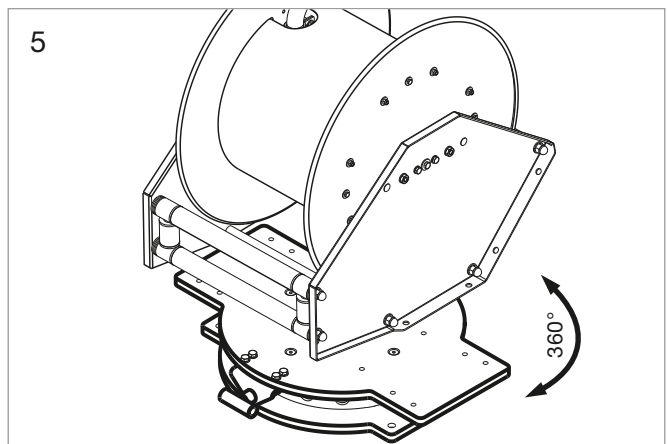
ACCESSORIES

SWIVEL SUPPORT FOR PLAIN INSTALLATION (5)

The Swivel Support is suitable for turning the hose reel in the required direction.

It is used for a plain surface (Pos. A) and allows a free rotation of the reel on its central pin enabling rotations up to 360°.

The integrated lock can fix the reel in the chosen position in 20° steps.



HOSE STOPS (6)

The hose reels can be supplied with a Hose Stop. It prevents the completely rewinding of the hose and can be placed anywhere along the hose assembly to the chosen of the hose length. Shape and dimension can vary according to the hose diameter.



ELAFLEX Hose Reels are supplied as a complete customised package incl. our hoses, couplings and nozzles.

Hose Reels '**Compact Line T**' with automatic spring-loaded rewind system, used for retraction of Elaflex hoses up to 8 m in max. DN 25.

This design has a narrow frame with a max. width of 320 mm and is optimal for installation within limited spaces, e.g. mobile refuelling equipment or cabinets.

To ensure a larger capacity and a proper distribution of the hose spirals on the drum, the OUT connection is placed outside the disks.

Suitable for a wide range of media, e.g. gasoline, diesel, aviation fuels, urea solution (AdBlue®), detergents, solvents, oils, water, gases and others. For example: Slimline 'SL' 25 with ZVA 25 for stationary and mobile refuelling of heavy vehicles.

MATERIALS

Frame: available in polyester powder coated carbon steel, UV resistant (on request: cataphoresis treatment or zinc plated) or stainless steel (AISI 304 or AISI 316L).

Wet parts: available in carbon steel or stainless steel (AISI 304 or AISI 316L).

Swivel joint: available in zinc plated carbon steel, brass or stainless steel (AISI 303 / AISI 316L), in 90° or straight shape*).

Working pressure up to 200 bar*).

Temperature range -40° to +120° C*).

*) depending on materials

COLOURS



RAL 5017



RAL 3002



Special Colours
(on request)

MOUNTING POSITIONS

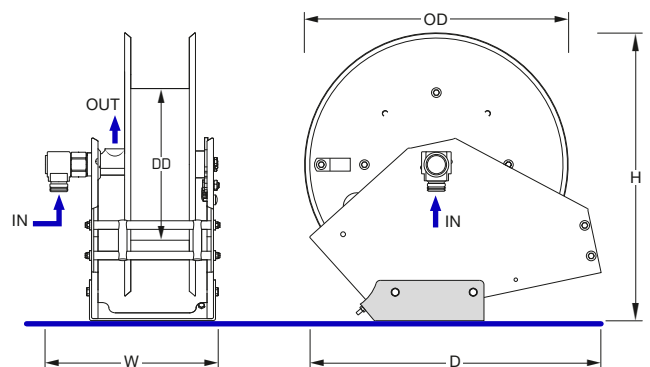
The integrated mounting plate is removable and suits for plain (Pos. A) or vertical (Pos. B) surfaces.

The mounting plate can be easily fixed on the corresponding holes of sidewall plates.

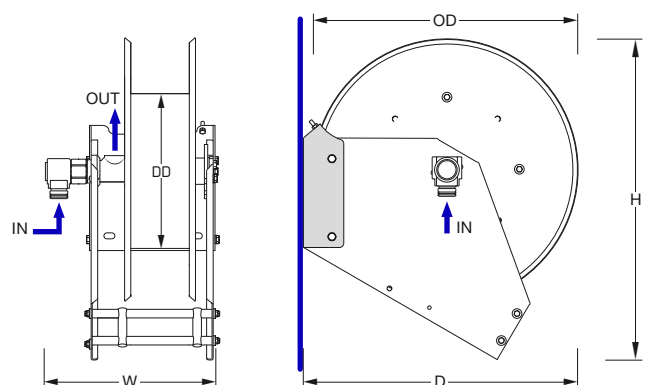


Cert. ATEX Dir 94/9/CE
Gr. II Cat. 2 GD c IIB TX
Zone 1, 2, 21, 22

Mounting Position A: Plane Surface



Mounting Position B: Vertical Surface



Recommended Hose		Connections	Drum Diameter	Disc Diameter	Dimensions Position A	Dimensions Position B	Weight	Standard Part Number
max. Length	max. DN	IN / OUT	DD Ø (mm)	OD Ø (mm)	W x D x H (mm)	W x D x H (mm)	kg	Type
8 m	DN 25	1" bsp male / 1" bsp female	283	490	320 x 550 x 535	320 x 515 x 600	19	HR CL T

Please contact our sales team to check capacity when smaller hose diameters are required.

FEATURES

ANTI-KINKING SLEEVE (1)

The Anti-Kinking Sleeve is useful to avoid kinking of the hose around the disc during the assembly.

DRUM STOP MECHANISM (2)

All our spring rewind hose reels are equipped with a durable Drum Stop of stainless steel or steel FE 510 OR to avoid the accidental hose rewinding. It is also not burdening the operator by permanently pulling the hose against spring force.

HOSE GUIDE (3)

The static Hose Guide is integrated in the frame with durable PVC or stainless steel rollers. The bearings are maintenance free self-lubricating. The Hose Guide for 'Compact Line T' is provided in low position as standard.

ACCESSORIES

SWIVEL BRACKET FOR WALL INSTALLATION (4)

The Swivel Bracket enables the hose reel to follow the hose direction. It ensures an easy handling and tidy hose rewinding.

SWIVEL SUPPORT FOR PLAIN INSTALLATION (5)

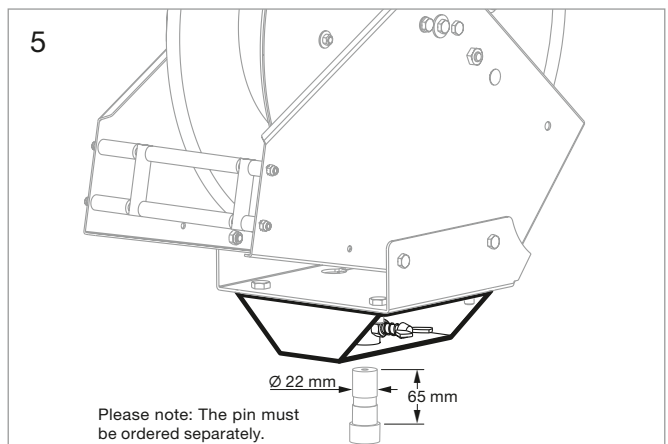
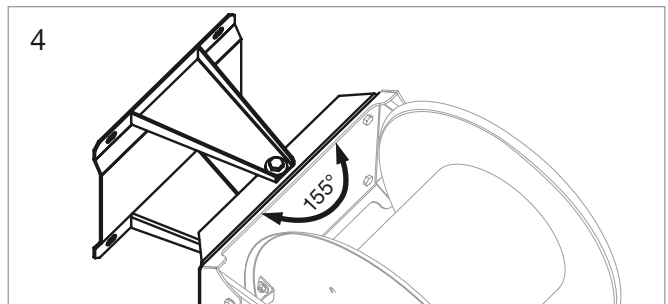
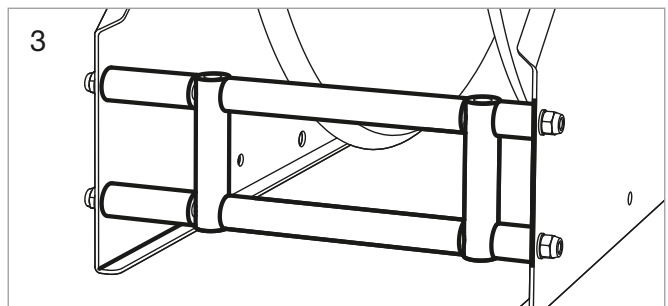
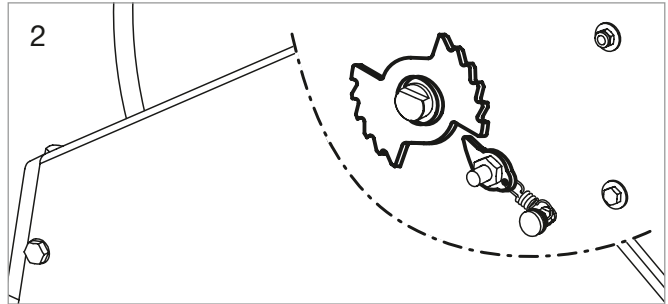
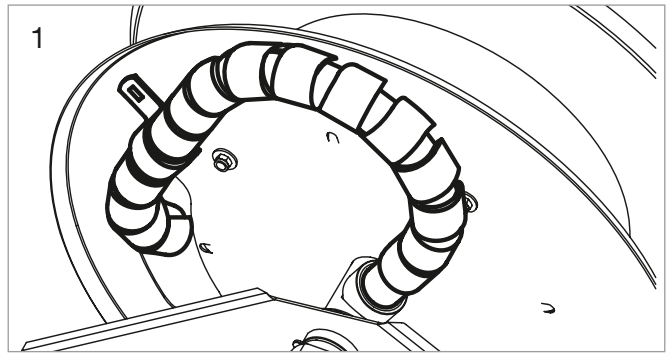
The Swivel Support is suitable for turning the hose reel in the required direction.

It is used for a plain surface (Pos. A) and allows a free rotation of the reel on its central pin enabling rotations up to 360°.

The integrated lock can fix the reel in the chosen position in 20° steps.

HOSE STOPS (6)

The hose reels can be supplied with a Hose Stop. It prevents the complete rewinding of the hose and can be placed anywhere along the hose assembly to the chosen of the hose length. Shape and dimension can vary according to the hose diameter.



ELAFLEX Hose Reels are supplied as a complete customised package incl. our hoses, couplings and nozzles.

Hose Reels '**Compact Line B**' with automatic spring-loaded rewind system, used for retraction of Elaflex hoses up to 20 m in max. DN 25.

The small and lightweight design makes it easy to handle. To ensure a larger capacity and a proper distribution of the hose spirals on the drum, the OUT connection is placed outside the disks, hose is guided through disk.

Suitable for a wide range of media, e.g. gasoline, diesel, aviation fuels, urea solution (AdBlue®), detergents, solvents, oils, water, gases and others. For example: Slimline 'SL' 21 with ZVA Slimline 2 for boat refuelling.

MATERIALS

Frame: available in polyester powder coated carbon steel, UV resistant (on request: cataphoresis treatment or zinc plated) or stainless steel (AISI 304 or AISI 316L).

Wet parts: available in carbon steel or stainless steel (AISI 304 or AISI 316L).

Swivel joint: available in zinc plated carbon steel, brass or stainless steel (AISI 303/AISI 316L), in 90° or straight shape*).

Working pressure up to 200 bar*).

Temperature range -40° to +120° C*).

COLOURS



RAL 5017



RAL 3002



Special Colours

(on request)

MOUNTING POSITIONS

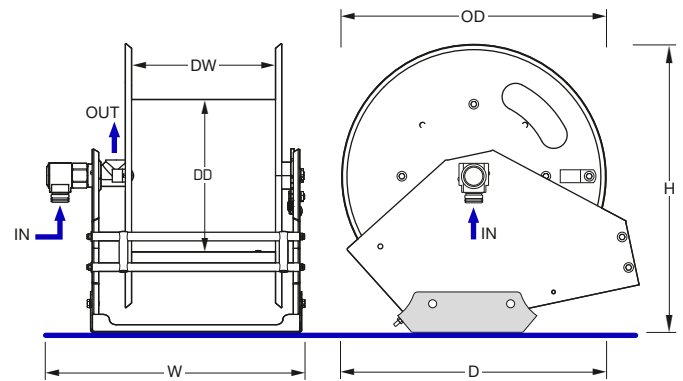
The integrated mounting plate is removable and suits for plain (Pos. A) or vertical (Pos. B) surfaces.

The mounting plate can be easily fixed on the corresponding holes of sidewall plates.

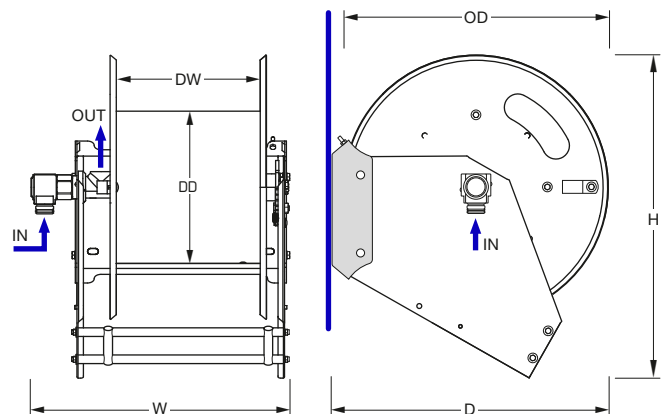


Ex Cert. ATEX Dir 94/9/CE
Gr. II Cat. 2 GD c IIB TX
Zone 1, 2, 21, 22

Mounting Position A: Plain Surface



Mounting Position B: Vertical Surface



Recommended Hose		Connections	Drum Diameter	Disc Diameter	Dimensions Position A	Dimensions Position B	Weight	Standard Part Number
max. Length	max. DN	IN / OUT	DD Ø (mm)	OD Ø (mm)	W x D x H (mm)	W x D x H (mm)	kg	Type
20 m	DN 25	1" bsp male / 1" bsp female	283	490	480 x 550 x 535	480 x 515 x 600	26	HR CL B

Please contact our sales team to check capacity when smaller hose diameters are required.

FEATURES

ANTI-KINKING SLEEVE (1)

The Anti-Kinking Sleeve is useful to avoid kinking of the hose around the disc during the assembly.

DRUM STOP MECHANISM (2)

All our spring rewind hose reels are equipped with a durable Drum Stop of stainless steel or steel FE 510 OR to avoid the accidental hose rewinding. It is also not burdening the operator by permanently pulling the hose against spring force.

HOSE GUIDE (3)

The static Hose Guide is integrated in the frame with durable PVC or stainless steel rollers. The bearings are maintenance free self-lubricating. The Hose Guide for 'Compact Line B' is provided in low position as standard.

ACCESSORIES

SWIVEL BRACKET FOR WALL INSTALLATION (4)

The Swivel Bracket enables the hose reel to follow the hose direction. It ensures an easy handling and tidy hose rewinding.

SWIVEL SUPPORT FOR PLAIN INSTALLATION (5)

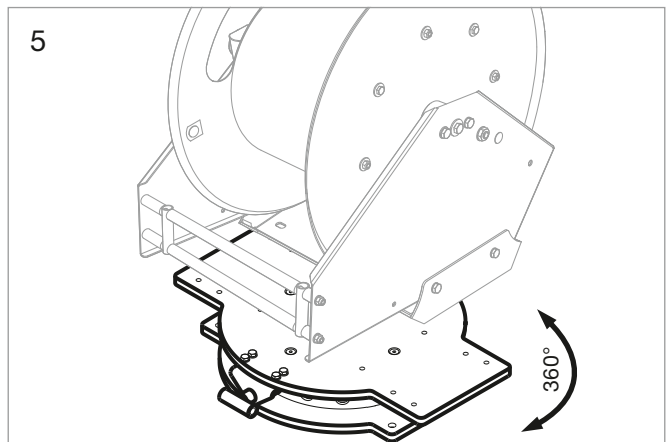
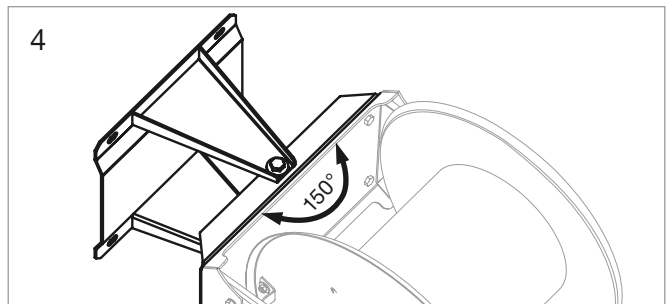
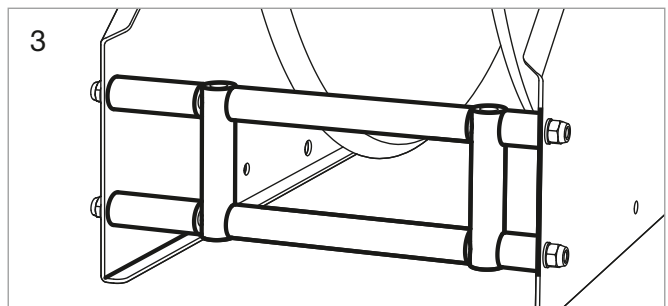
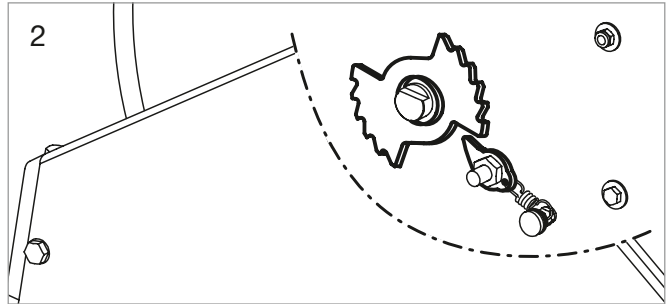
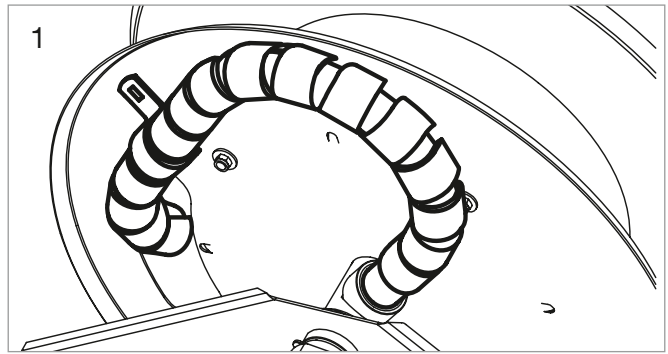
The Swivel Support is suitable for turning the hose reel in the required direction.

It is used for a plain surface (Pos. A) and allows a free rotation of the reel on its central pin enabling rotations up to 360°.

The integrated lock can fix the reel in the chosen position in 20° steps.

HOSE STOPS (6)

The hose reels can be supplied with a Hose Stop. It prevents the complete rewinding of the hose and can be placed anywhere along the hose assembly to the chosen of the hose length. Shape and dimension can vary according to the hose diameter.



Vapour Recovery Hose Reels are only available from ELAFLEX production. They are equipped with a COAX hose and ZVA Slimline 2 GR nozzle.

Hose Reels 'Compact Line VR' for active vapour recovery with automatic spring-loaded rewind system suitable for COAX dispensing hose assemblies up to 20m. The small and compact design makes it easy to handle. Our COAX adaptor (splitter) ZAF2.1 cr is attached outside the disc to provide an easy connection to the Stage II vapour recovery system. We optionally supply our ZVA Slimline 2 GR nozzle with a CSB21 safety break.

All Elaflex components are certified in combination with vacuum pumps and vapour control units of all the major manufacturers*).

Suitable for gasoline fuels (also with ethanol content).

*) Please check the installation requirements for the vapour recovery pumps.

MATERIALS

Frame available in polyester powder coated carbon steel UV resistant (on request: cataphoresis treatment or zinc plated base) or stainless steel (AISI 304 or AISI316L).

COLOURS



RAL 5017



RAL 3002



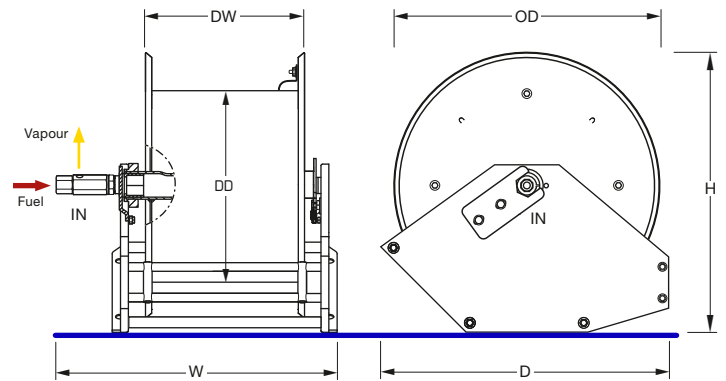
Special Colours
(on request)

MOUNTING POSITIONS

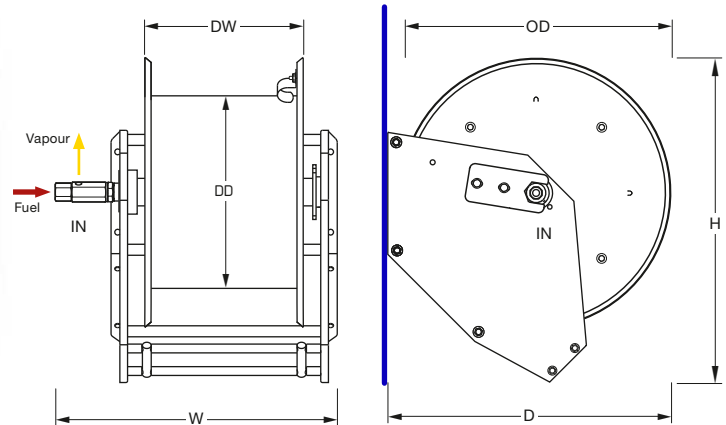
The specially designed side plates allow the installation on plain (Pos. A) or vertical surfaces (Pos. B) without further modification.



Mounting Position A: Plain Surface



Mounting Position B: Vertical Surface



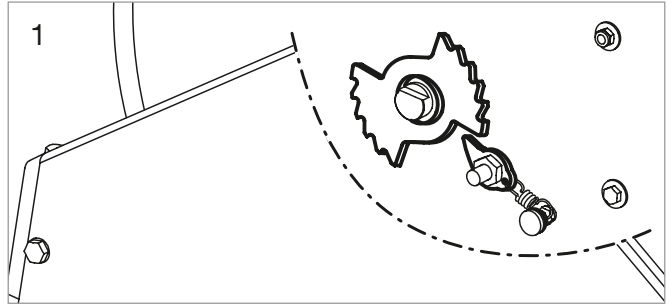
COAX Hose Assembly max. Length		Connections		Drum Diameter	Disc Diameter	Dimensions Position A	Dimensions Position B	Weight	Standard Part Number	
DN	IN	DD Ø (mm)	OD Ø (mm)	W x D x H (mm)	W x D x H (mm)	kg	Type			
20 m	DN 21/8	1" bsp female/ 1/4" bsp female	350	490	416 x 533 x 517	416 x 517 x 591	21	HR CL VR		

Please contact our sales team for further information.

FEATURES

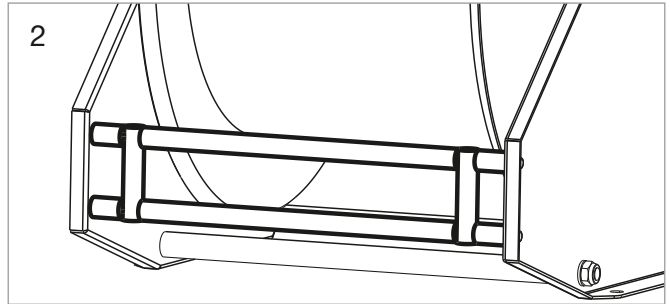
DRUM STOP MECHANISM (1)

All our spring rewind hose reels are equipped with a durable Drum Stop of stainless steel or steel FE 510 OR to avoid the accidental hose rewinding. It is also not burdening the operator by permanently pulling the hose against spring force.



HOSE GUIDE (2)

The static Hose Guide is integrated in the frame with durable PVC or stainless steel rollers. The bearings are maintenance free self-lubricating. The Hose Guide for 'Compact Line VR' is provided in low position as standard.



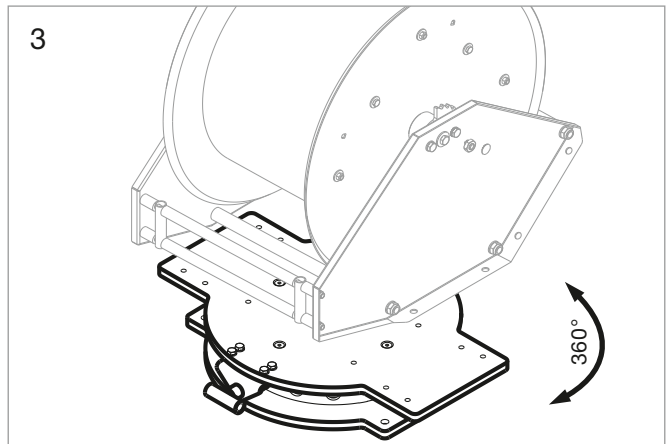
ACCESSORIES

SWIVEL SUPPORT FOR PLAIN INSTALLATION (3)

The Swivel support is suitable for turning the hose reel in the required direction.

It is used for a plain surface (Pos. A) and allows a free rotation of the reel on its central pin enabling rotations up to 360°.

The integrated lock can fix the reel in the chosen position in 20° steps.



HOSE STOPS (4)

The hose reels can be supplied with a Hose Stop. It prevents the complete rewinding of the hose and can be placed anywhere along the hose assembly.



Our 'HR' Hose Reel Packages are supplied with our bespoke hoses, couplings or nozzles.

- all components made by Elaflex – one supplier, one system, one liability, one price
- delivered as complete tested system including hoses, couplings and nozzles
- high quality standard, longevity, short lead times
- modular designed, various materials and colours to suit space, media and requirements

HR 'Compact Line' is fitted with spring rewind system and integrated static hose guide.

HR 'Modular Line' comes with various rewind systems (manual, electric, hydraulic, pneumatic).

Commonly used for applications such as:

- Aviation
- Marina/Ports/Ships
- Depots/Petrol Stations
- Trucks

HEAVY DUTY (HD) SPRING REWIND HOSE REELS

HR 'Compact Line HD 25'



Suitable for hose sizes DN 13 - 25
(e.g. up to 40 m for DN 25)

HR Information 01E

or

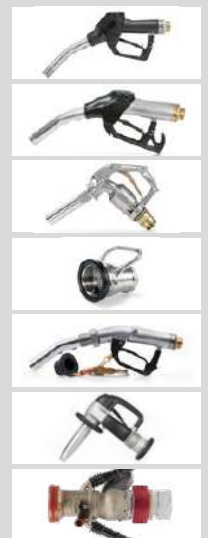
HR 'Compact Line HD 50'



Suitable for hose sizes DN 32 - 50
(e.g. up to 25 m for DN 50)

HR Information 02E

+



ECONOMY SPRING REWIND HOSE REELS

HR 'Compact Line T'



Suitable for hose sizes DN 13 - 25
(e.g. up to 8 m for DN 25)

HR Information 03E

or

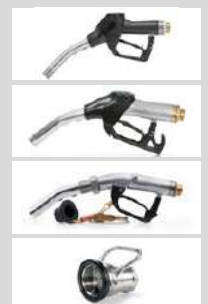
HR 'Compact Line B'



Suitable for hose sizes DN 13 - 25
(e.g. up to 20 m for DN 25)

HR Information 04E

+



Also available:
Vapour Recovery
Hose Reels
HR Information 07E

MODULAR REWIND HOSE REELS

(available with manual, electric, hydraulic, pneumatic rewind system)

HR 'Modular Line G + GB'



Suitable for hose sizes DN 25 - 200
(e.g. up to 40 m for DN 38)

HR Information 05E

or

HR 'Modular Line M'



Suitable for hose sizes DN 13 - 25
(e.g. up to 50 m for DN 25)

HR Information 06E

+



Special Packages

STORAGE HOSE REELS

For Storage Only



Suitable for hoses DN 13 - 250,
for a safe and clean storage

All Types of Rewind Systems

BONDING REELS

Earthing and Bonding



Highly visible bonding cable, up to 30m,
DN 6 mm, different types of clamps

Spring Rewind

For further details and information, please contact our Sales Team.

