



Producto distribuido por

SDM
Oil & Gas

 (+51) 999 012777  ventas@sdm.pe

www.sdm.pe | Av. Galvez Barrenechea 274. San Isidro

Cryogenic Bronze Ball Valve

Reduced Bore

DN15- DN50 (1/2" - 2")

This Bronze uni-directional ball valve has been designed specifically for cryogenic applications. It is available with NPT or BSP threaded ends.

The flow co-efficient (CV) allows full flow of media from filling stations and portable delivery systems therefore no delay in filling time.

Other variations include:

- Stainless Steel Version
- Actuated
- Full Bore

All valves are degreased for oxygen duty, assembled in clean room conditions and pressure tested prior to dispatch.

Maximum Working Pressure (MWP)

Subject to end connections

Up to 50 bar (725 psi) at -196°C to +65°C

Features

- Spring loaded gland seal giving low torque levels under both ambient and cryogenic conditions
- One piece, anti-blow-out stem
- Relief hole to prevent trapping of liquefied gases
- Designed to prevent incorrect, and hence dangerous, re-assembly after stripping for maintenance
- Removable centre section designed to industry standard dimensions, allowing interchangeability in existing installations
- Valves can be supplied with actuators fitted allowing fast, remote automatic operation
- Long life spring loaded gland packing

Technical

- Designed and engineered for use with Group 1 gases.
- Designed and manufactured in accordance with ASTM B31.1, BS EN 1626 and BS ISO 21011
- Optional full material traceability backed by BS EN 10204 3.1/3.2 certification.

CE Marked according to the Pressure Equipment Directive



DN50 Bronze Ball Valve with NPT Threaded Ends



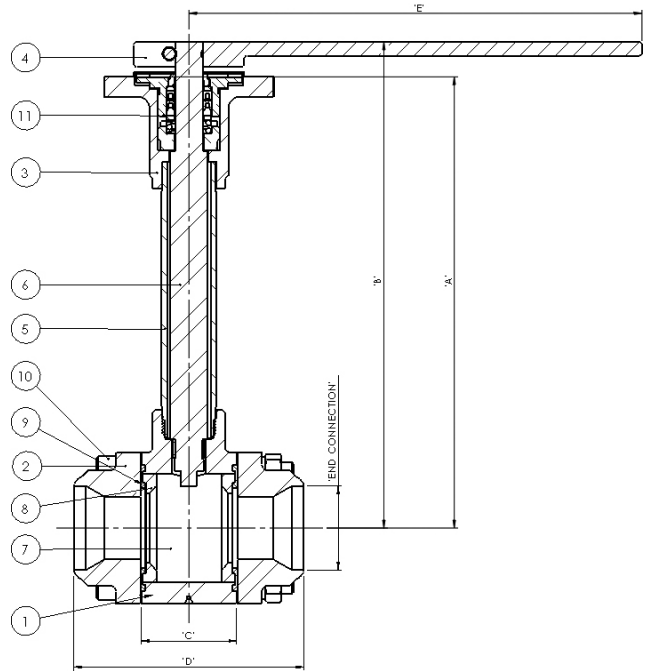
DN15 Ball Valve with NPT Threaded Ends



DN25 Ball Valve with NPT Threaded Ends

Materials

| | Bronze |
|---------------------|--------------------------------------|
| 1. Body | Gunmetal BS EN 1982 CC491K |
| 2. End Adaptors | Gunmetal BS EN 1982 CC491K |
| 3. Gland Housing | Stainless Steel ASTM A351 CF8M |
| 4. Lever | Stainless Steel ASTM A351 CF8M |
| 5. Extension Tube | Stainless Steel ASTM A269 TP304L |
| 6. Stem | Stainless Steel BS EN 10088-3 1.4401 |
| 7. Ball | Brass BS EN 12164 CW614N |
| 8. Ball Seal | Hostafion |
| 9. End Adaptor Seal | Virgin PTFE |
| 10. Fasteners | Stainless Steel BS6105 A2/A4 Gr.70 |
| 11. Gland Packings | Virgin PTFE |



Specifications

| Size | Valve Size | | Reduced Bore Size | | Dimension | | | | | | Torque | | CV (US GPM) | Weight (kg) |
|------|------------|----|-------------------|----|-----------|-----|----|-----|-----|-------|--------|------|-------------|-------------|
| | mm | in | mm | in | A | B | C | D | E | P.C.D | Nm | lbft | | |
| DN15 | 15 | ½ | 11 | ¾ | 230 | 250 | 21 | 67 | 190 | 50 | 10 | 7 | 9 | 2 |
| DN25 | 25 | 1 | 20 | ¾ | 230 | 250 | 32 | 96 | 190 | 60 | 23 | 17 | 30 | 3 |
| DN40 | 40 | 1½ | 32 | 1¼ | 230 | 250 | 49 | 117 | 230 | 80 | 40 | 30 | 90 | 5 |
| DN50 | 50 | 2 | 37 | 1½ | 230 | 250 | 56 | 129 | 230 | 100 | 62 | 46 | 138 | 7 |

How to Order

| Part Number | Valve Size Diameter Nominal (DN) | Connection Type | Stem Length (mm) |
|----------------|----------------------------------|-----------------|------------------|
| CZFR30GTAE4BND | DN15 | BSP-PL | 230 |
| CZFR30GTEE4BND | | NPT | |
| CZFR50GTAE4BND | DN25 | BSP-PL | 230 |
| CZFR50GTEE4BND | | NPT | |
| CZFR70GTAE4BND | DN40 | BSP-PL | 230 |
| CZFR70GTEE4BND | | NPT | |
| CZFR80GTAE4BND | DN50 | BSP-PL | 230 |
| CZFR80GTEE4BND | | NPT | |

Please contact us for other options.

BESTOBELL
AQUATRONIX
SINCE/DEPUIS 1953

Head Office
2880 Argenta Road, Unit 3
Mississauga, ON L5N 7X8
salesdesk@bestobell.com
1-800-668-3979
www.bestobell.com

Montréal Office
970 Montée de Liesse, #204
St. Laurent, QC H4T 1W7
ventes@bestobell.com
1-877-331-1225

Atlantic Office
166 North Side Road
Riverport, NS B0J 2W0
dmossman@bestobell.com
902-529-0355