



Producto distribuido por

SDM
Oil & Gas

 (+51) 999 012777  ventas@sdm.pe

www.sdm.pe | Av. Galvez Barrenechea 274. San Isidro

Cryogenic Safety Relief Valve

Stainless Steel

Nozzle 10 - 20 (3/8" - 3/4")

A range of high quality Stainless Steel relief valves designed to comply with ISO 4126 (Safety Valves General Requirement), Ad-Merkblatt A2 (Safety Devices against Excess Pressure) and TUV requirements. They are eminently suited to the protection of static and road going cryogenic storage tanks against damaging over pressure.

There are three basic sizes, defined by the throat diameter and each is available with a variety of inlet and outlet connections.

The valve is designed and factory set to lift repeatedly within 2% of the set pressure and to reseat above 92% of set pressure. Spring pre-compression and blow down ring settings are sealed after test to inhibit unauthorized tampering.

Flow rates at 10% above set pressure.

All valves are degreased for oxygen duty, assembled in clean room conditions and sealed in robust polythene bags prior to dispatch.

Each valve is individually set and flow tested and then stamped with the date of manufacture and its own unique serial number prior to dispatch.

Maximum Working Pressure (MWP)

Subject to end connections

Up to 40 bar (580 psi) at -196°C to + 65°C

Technical

- Designed and engineered for use with Group 1 gases.
- Designed and manufactured to ISO 4126 (SVGR) ASTM B31.1, BS EN 1626
- Optional full material traceability backed by BS EN 10204 3.1/3.2 certification.

CE Marked according to the Pressure Equipment Directive

Materials

| | Stainless Steel |
|---|--|
| 1. Body | Stainless Steel ASTM A351 CF8M |
| 2. Seat | HT Brass BS EN 12164 CW721R |
| 3. Adjusting Cap | SS ASTM A351 CF8M |
| 4. Disc (Nozzle 10) Disc (Nozzle 15, 20) | Brass BS EN 12163 CW712R Phosphor Bronze BS EN 12163 CW451R |
| 5. Seal | PTFE TF7196 |
| 6. Blow Down Ring | Gunmetal BS EN 1982 CC491K |
| 7. Spring | Stainless Steel 302 S26 BS2056 |
| 8. Weather Proof Cap | SS 316 BS EN 10088-3 1.4401 |

* Full Stainless Steel Relief Valve available on request.



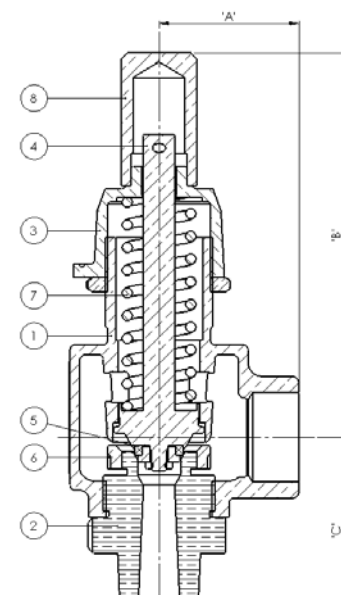
Nozzle 10 Stainless Steel Safety Relief Valve



Nozzle 10 Safety Relief Valve



Nozzle 20 Safety Relief Valve



Specifications

| Size | Unit | Nozzle 10 | Nozzle 15 | Nozzle 20 |
|--------|------|-----------|-----------|-----------|
| A | mm | 48 | 64 | 64 |
| B | mm | 130 | 133 | 133 |
| C | mm | 60 | 73 | 73 |
| Weight | kg | 1.5 | 3 | 3 |

Technical Data

| Inlet Orifice Dia (mm) | Set Pressure Range (Bar) | Inlet Sizes (BSP/NPT) | Outlet Sizes (BSP/NPT) |
|------------------------|--------------------------|-----------------------|------------------------|
| 11.4 | 1.7 - 40 | ½" or ¾" | ¾" or 1" |
| 14 | 1.7 - 40 | ¾" | 1¼" |
| 20.50 | 1.7 - 30 | 1" | 1¼" |

How to Order

| Part Number | Orifice Diameter | Inlet Connection | Outlet Connection | Pressure Range |
|------------------|------------------|------------------|-------------------|-----------------------------|
| Nozzle 10 | | | | |
| CWT20LK17N00 | 11.40mm | ½" NPT Male | ¾" NPT Female | 54-79 psi (3.7-5.4 bar) |
| CWT20RK17N00 | | ¾" NPT Male | | |
| CWT20LR17N00 | | ½" NPT Male | 1" NPT Female | |
| CWT20RR17N00 | | ¾" NPT Male | | |
| CWT20LK25N00 | | ½" NPT Male | ¾" NPT Female | 80-111 psi (5.5-7.6 bar) |
| CWT20RK25N00 | | ¾" NPT Male | | |
| CWT20LR25N00 | | ½" NPT Male | 1" NPT Female | |
| CWT20RR25N00 | | ¾" NPT Male | | |
| CWT20LK38N00 | | ½" NPT Male | ¾" NPT Female | 149-219 psi (10.3-15.1 bar) |
| CWT20RK38N00 | | ¾" NPT Male | | |
| CWT20LR38N00 | | ½" NPT Male | 1" NPT Female | |
| CWT20RR38N00 | | ¾" NPT Male | | |
| CWT20LK48N00 | | ½" NPT Male | ¾" NPT Female | 220-289 psi (15.2-19.9 bar) |
| CWT20RK48N00 | | ¾" NPT Male | | |
| CWT20LR48N00 | | ½" NPT Male | 1" NPT Female | |
| CWT20RR48N00 | | ¾" NPT Male | | |
| CWT20LK53N00 | | ½" NPT Male | ¾" NPT Female | 290-435 psi (20-30 bar) |
| CWT20RK53N00 | | ¾" NPT Male | | |
| CWT20LR53N00 | | ½" NPT Male | 1" NPT Female | |
| CWT20RR53N00 | | ¾" NPT Male | | |
| Nozzle 15 | | | | |
| CWT30RV22N00 | 14mm | ¾" NPT Male | 1 ¼" NPT Female | 71-112 psi (4.9-7.7 bar) |
| CWT30RV34N00 | | | | 113-156 psi (7.8-10.7 bar) |
| CWT30RV39N00 | | | | 157-225 psi (10.8-15.5 bar) |
| CWT30RV49N00 | | | | 226-320 psi (15.6-22 bar) |
| Nozzle 20 | | | | |
| CWT40UV31N00 | 20.50 | 1" NPT Male | 1 ¼" NPT Female | 110-159 psi (7.6-10.9 bar) |
| CWT40UV74N00 | | | | 290-362 psi (20-25 bar) |

Please contact us for other options.

BESTOBELL
AQUATRONIX
SINCE/DEPUIS 1953

Head Office
 2880 Argentia Road, Unit 3
 Mississauga, ON L5N 7X8
 salesdesk@bestobell.com
 1-800-668-3979
 www.bestobell.com

Montréal Office
 970 Montée de Liesse, #204
 St. Laurent, QC H4T 1W7
 ventes@bestobell.com
 1-877-331-1225

Atlantic Office
 166 North Side Road
 Riverport, NS B0J 2W0
 dmossman@bestobell.com
 902-529-0355