



Producto distribuido por

SDM
Oil & Gas

 (+51) 999 012777  ventas@sdm.pe

www.sdm.pe | Av. Galvez Barrenechea 274. San Isidro

Cryogenic Actuated Globe Valve

Pneumatically Actuated Globe Valve

DN15 - DN150 (1/2" – 6")

The Parker Bestobell on/off and control valves are fitted with a pneumatic diaphragm type actuator.

The actuator uses compressed air to open and a spring to close. Double actuation (i.e. actuated opening and closing) is available upon request.

The range is available with either Butt Weld, Socket Ends or flanged options.

All valves are degreased for oxygen duty, assembled in clean room conditions and pressure tested prior to dispatch.

Maximum Working Pressure (MWP)

(Subject to End Connections/Actuator)

Up to 50 bar (725 psi) at -196°C to + 65°C

Features

- Full range of Class 150 Stainless Steel extended globe valves.
- Class 300 available for sizes up to DN100
- Independent bonnet and flange design
- Full Bore
- Throttling and On/Off functions available

Technical

- Designed and engineered for use with Group 1 gases.
- Full material traceability backed by BS EN 10204 3.1/3.2 certification.
- Available in Butt Weld (ANSI B16.25), Socket Weld and Flange (ANSI B16.5) connections.

CE Marked according to the Pressure Equipment Directive

Materials

	Stainless Steel
1. Body	Stainless Steel ASTM A351 CF8M
2. Cover	Stainless Steel BS EN 10088-3 1.4301
3. Bonnet Flange	Stainless Steel ASTM A351 CF8M
4. Disc	Stainless Steel BS EN 10088-3 1.4401
5. Seal	PTFE TF7196
6. Gasket Bonnet	Sigma 511
7. Gland Packing	Virgin PTFE
8. Extension Tube	Stainless Steel ASTM A312 TP316L
9. Stem	Stainless Steel BS EN 10088-3 1.4401
10. Fasteners	Stainless Steel BS6105 A2/A4 .Gr.70

*Bronze body available on request



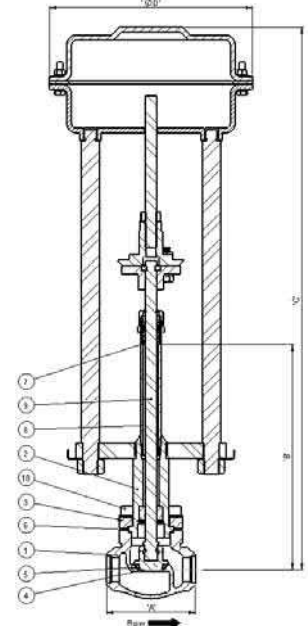
DN25 Pneumatically Actuated Globe Valve with Butt Weld Ends



DN50 Globe Valve with Flanged Ends



DN80 Globe Valve with Socket Ends



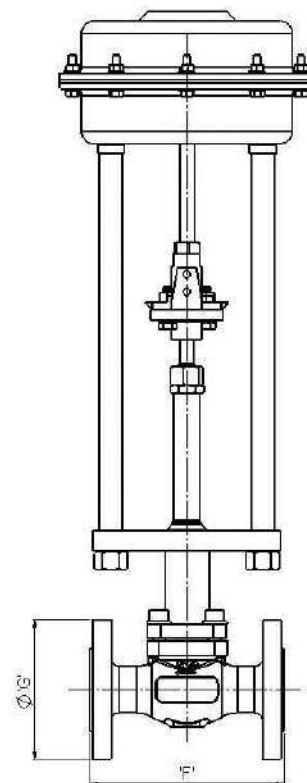
Specifications

Butt Weld/Socket Weld Ends

Size	Unit	DN15 ½"	DN25 1"	DN40 1½"	DN50 2"	DN65 2½"	DN80 3"	DN100 4"	DN150 6"
A	mm	68	92	121	146	178	178	292	406
B	mm	300	300	300	300	300	300	400	600
C	mm	480	620	637	647	662	682	862	1120
D	mm	162	210	310	310	310	310	415	512
Weight	kg	12	12	40	43	54	60	120	195
Cv	US GPM	3.6	13.2	26.5	43	75	108	198	400

Flanged Ends

Size	Unit	Class 300						Class 150	
		DN15 ½"	DN25 1"	DN40 1½"	DN50 2"	DN65 2½"	DN80 3"	DN100 4"	DN150 6"
F	mm	130	160	200	230	290	310	350	406
G	mm	95	124	155	165	191	210	254	279
Flange Thickness	mm	14	18	21	22	25	28	32	25
Weight	kg	14	15	46	50	62	72	140	210



How to Order

Part Number	Valve Size - Diameter Nominal (DN)	Connection Type	Stem Length (mm)	Maximum Working Pressure (bar)
CNT30B1D6CPA	DN15	Butt Weld Schedule 10	300	50
CNT30SNED6CPA		Socket Weld		
CNT30FCD6CPA		Flange Class 300		
CNT50B1D6CPA	DN25	Butt Weld Schedule 10	300	50
CNT50SNED6CPA		Socket Weld		
CNT50FCD6CPA		Flange Class 300		
CNT70B1D6CPA50	DN40	Butt Weld Schedule 10	300	50
CNT70SNED6CPA50		Socket Weld		
CNT70FCD6CPA50		Flange Class 300		
CNT80B1D6CPA	DN50	Butt Weld Schedule 10	300	40
CNT80SNED6CPA		Socket Weld		
CNT80FCD6CPA		Flange Class 300		
CNT90B1D6CPA	DN65	Butt Weld Schedule 10	300	16
CNT90SNED6CPA		Socket Weld		
CNT90FCD6CPA		Flange Class 300		
CNTA0B1D4CPA	DN80	Butt Weld Schedule 10	300	16
CNTA0SNED4CPA		Socket Weld		
CNTA0FCD4CPA		Flange Class 300		
CNTB0B1D7CPA	DN100	Butt Weld Schedule 10	400	16
CNTB0SNED7CPA		Socket Weld		
CNTB0FAD7CPA		Flange Class 150		
CNTD0B1D9CPA	DN150	Butt Weld Schedule 10	700	16
CNTD0FAD9CPA		Flange Class 150		

Please contact us for other options.

BESTOBELL
AQUATRONIX
SINCE / DEPUIS 1953

BEP-Bestobell
www.bestobell.com